

# CHAIN BUDDY DUAL STORAGE BIN

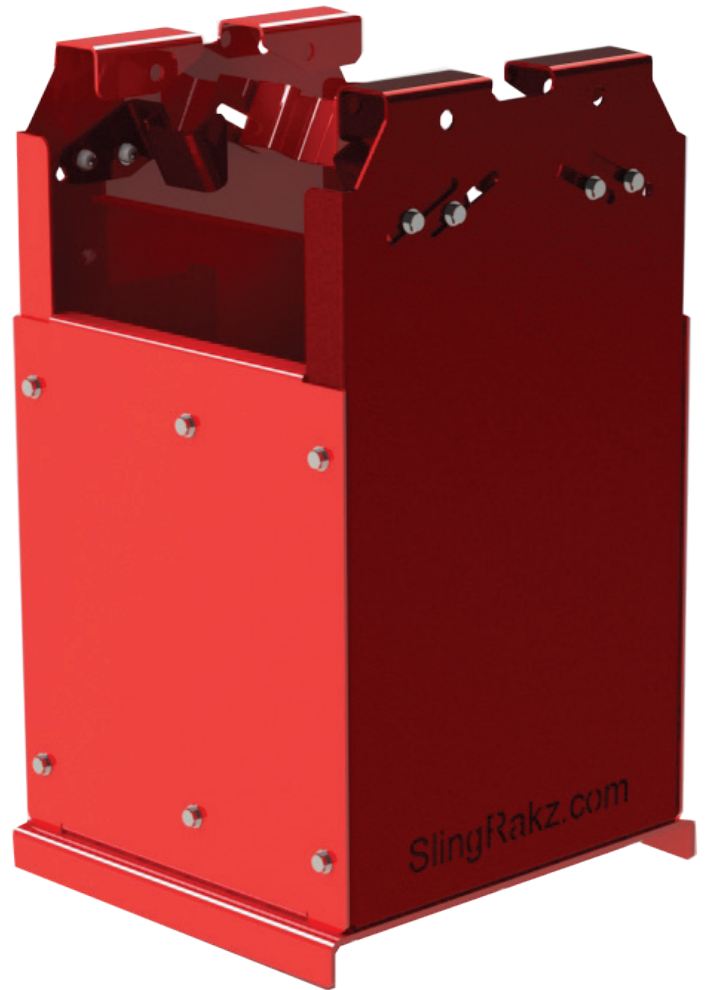
## SPECIFICATIONS

<b>Part No.</b>	SR7A
<b>Height Front</b>	623mm from Floor
<b>Height Back</b>	623mm from Floor
<b>Height Sides</b>	431mm from Floor
<b>Depth</b>	350mm
<b>Width</b>	380mm Base Plate
<b>Oblong Link T/S</b>	95mm – 315mm Width (13mm LMOL /16mm LSOL)
<b>Max Chain Assembly</b>	2 x 13mm x 2 Leg 4mtr / 2 x 10mm x 2 Leg 8mtr
<b>Capacity</b>	130KG
<b>Weight</b>	30KG

## SUPPLIED WITH

Certificate of conformance  
Assembly instructions  
Divider plate as standard

Can be supplied built on request (charges apply)



Made to accommodate a standard 2 wheel trolley



**AVAILABLE FROM**