

CHAIN BUDDY DUAL MOBILE STORAGE UNIT

SPECIFICATIONS

Part No.	SR7
Height Front	770mm from Floor
Height Back	770mm from Floor
Height Sides	550mm from Floor
Depth	350mm
Width	380mm Base Plate
Dolly Width	400mm
Dolly Depth	370mm
Dolly Height	145mm
Castors	2 Lockable / 2 Standard 75mm Roller Bearing (90kg Each)
Oblong Link T/S	95mm – 315mm Width (13mm LMOL /16mm LSOL)
Max Chain Assembly	2 x 13mm x 2 Leg 4mtr / 2 x 10mm x 2 Leg 8mtr
Capacity	130KG
Weight	44KG

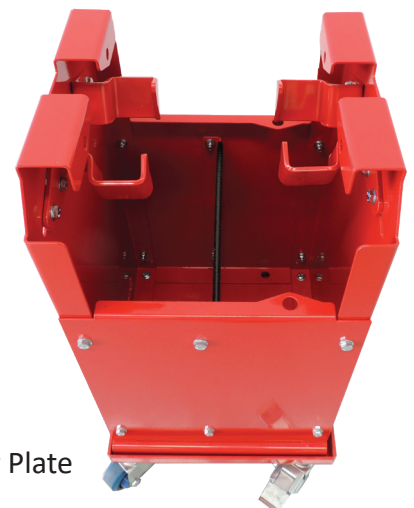
OPTIONAL EXTRAS

Handle Bar	16mm with Grip – SPBAR16
-------------------	--------------------------

SUPPLIED WITH

Certificate of conformance
Assembly instructions
Divider plate as standard

Can be supplied built on request (charges apply)



With Divider Plate

AVAILABLE FROM